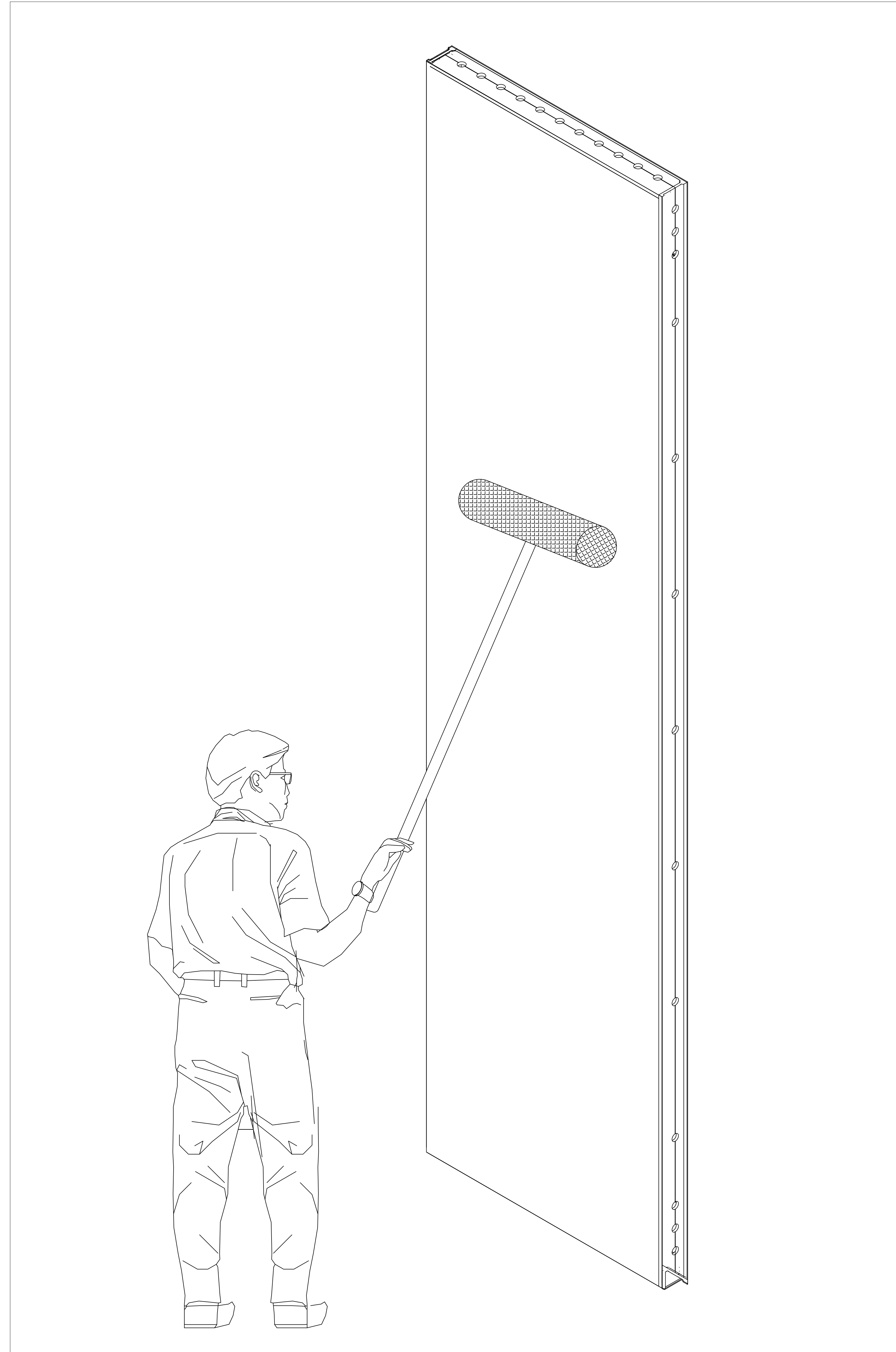


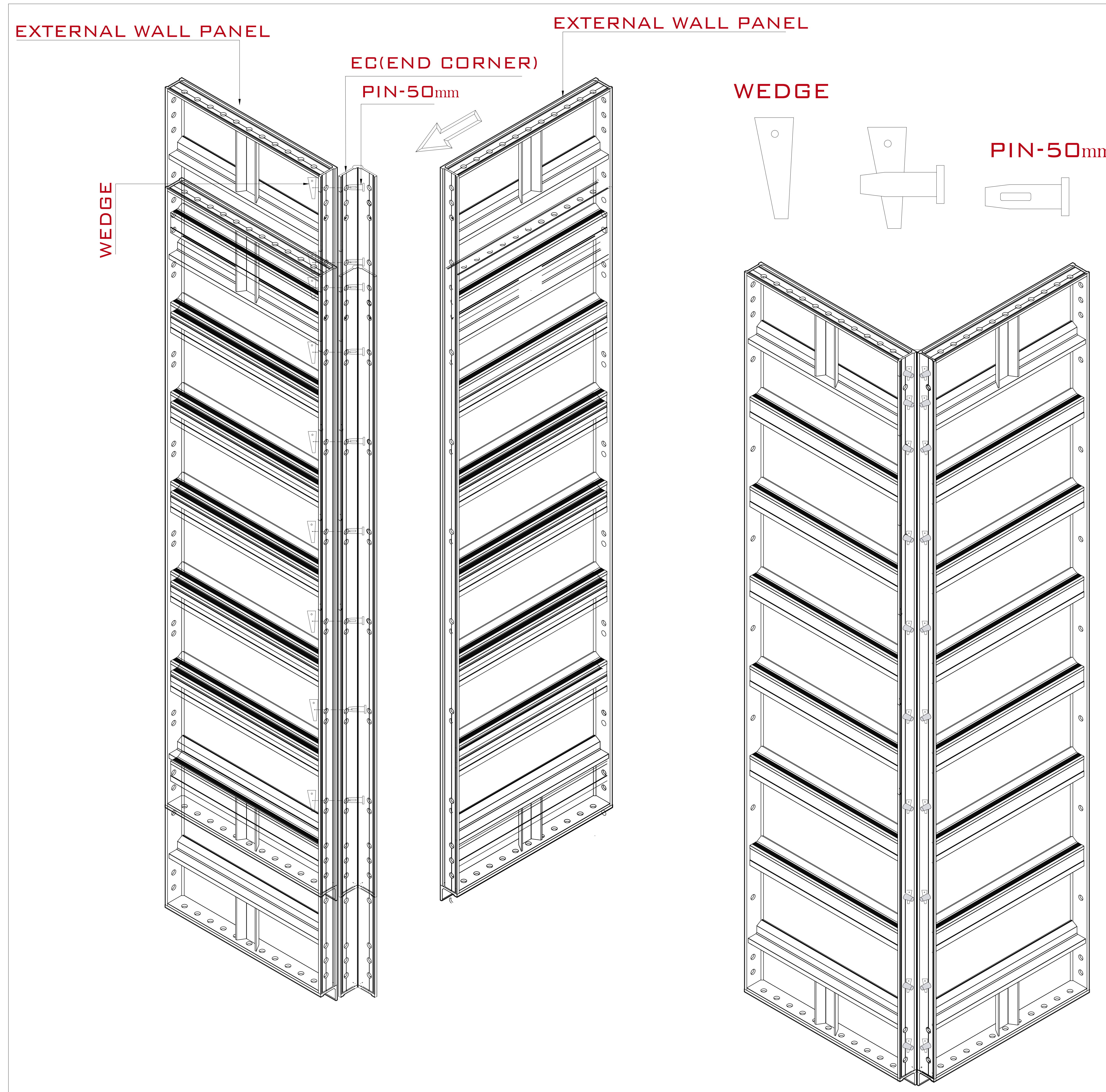
STEP NO-01

Form Release agent (Solvent based) to be applied on the surface of all the panels before the assembly process.



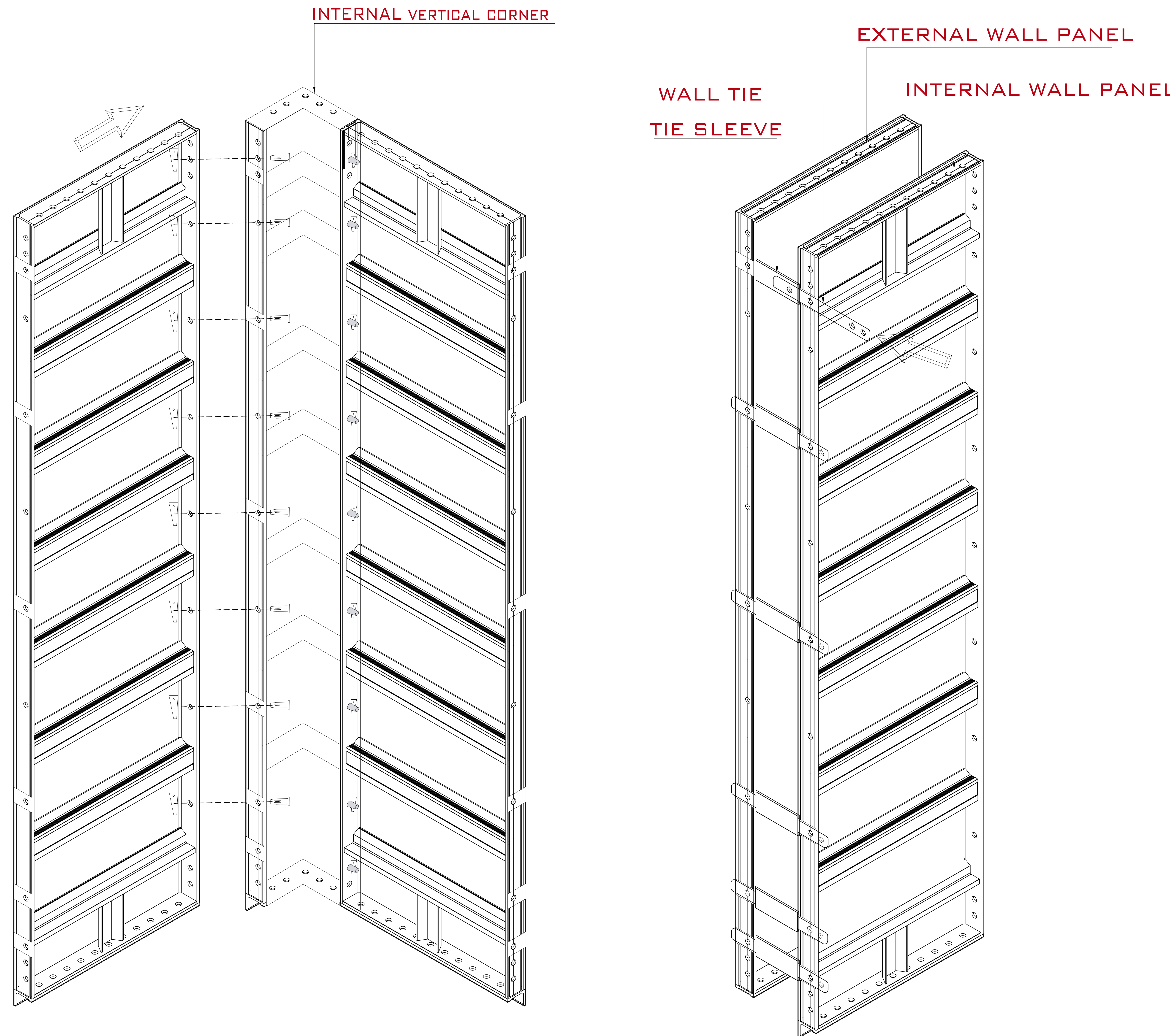
STEP NO-02

Outer Corner is fixed to External Wall Corner panel by round pin and wedge.



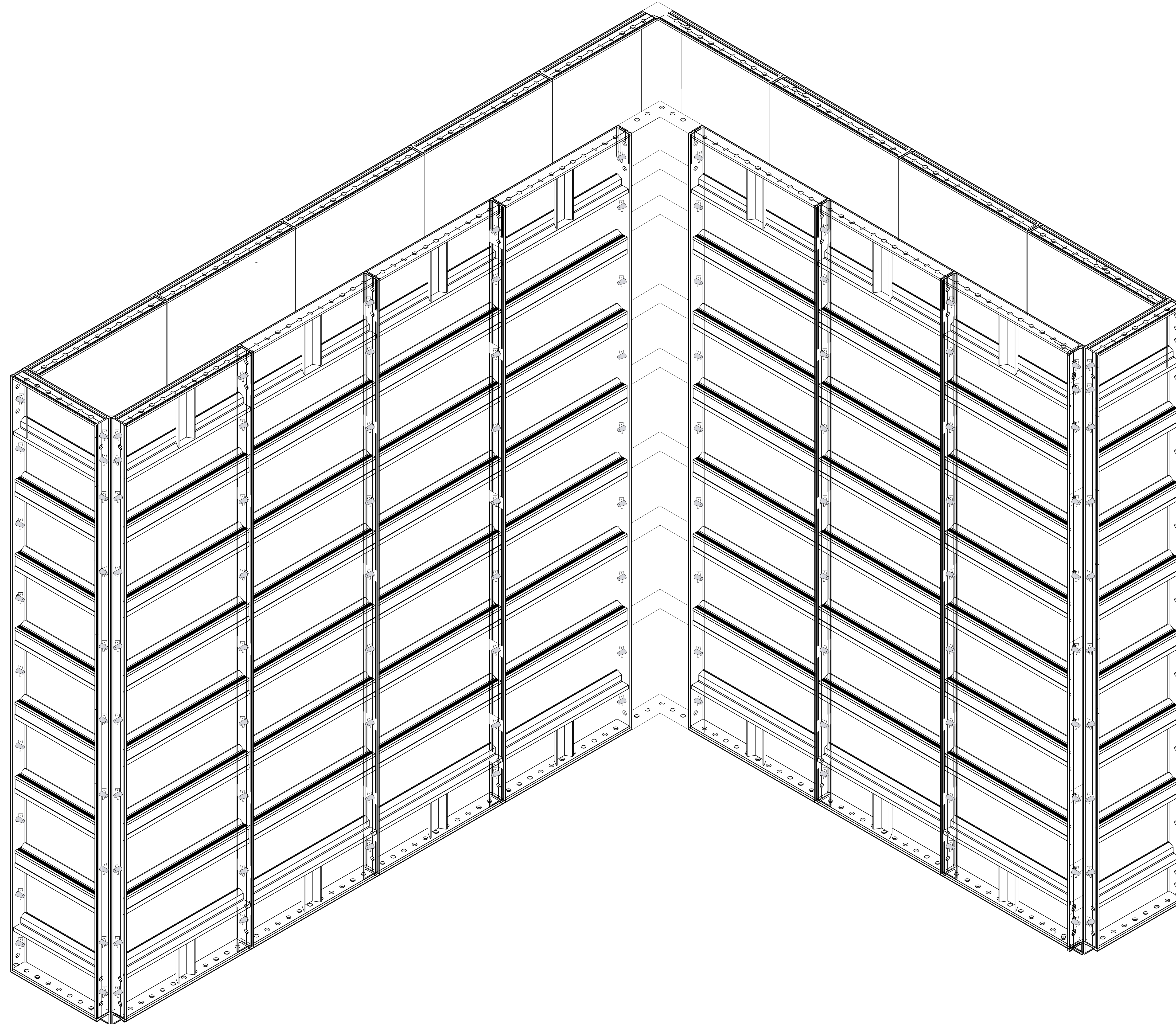
STEP NO-03

Inner Corner is fixed to the Internal Wall panels by round pin & wedge. The Internal and External Wall Panels are held by Flat Tie with Tie Bar Shield in between the panels.



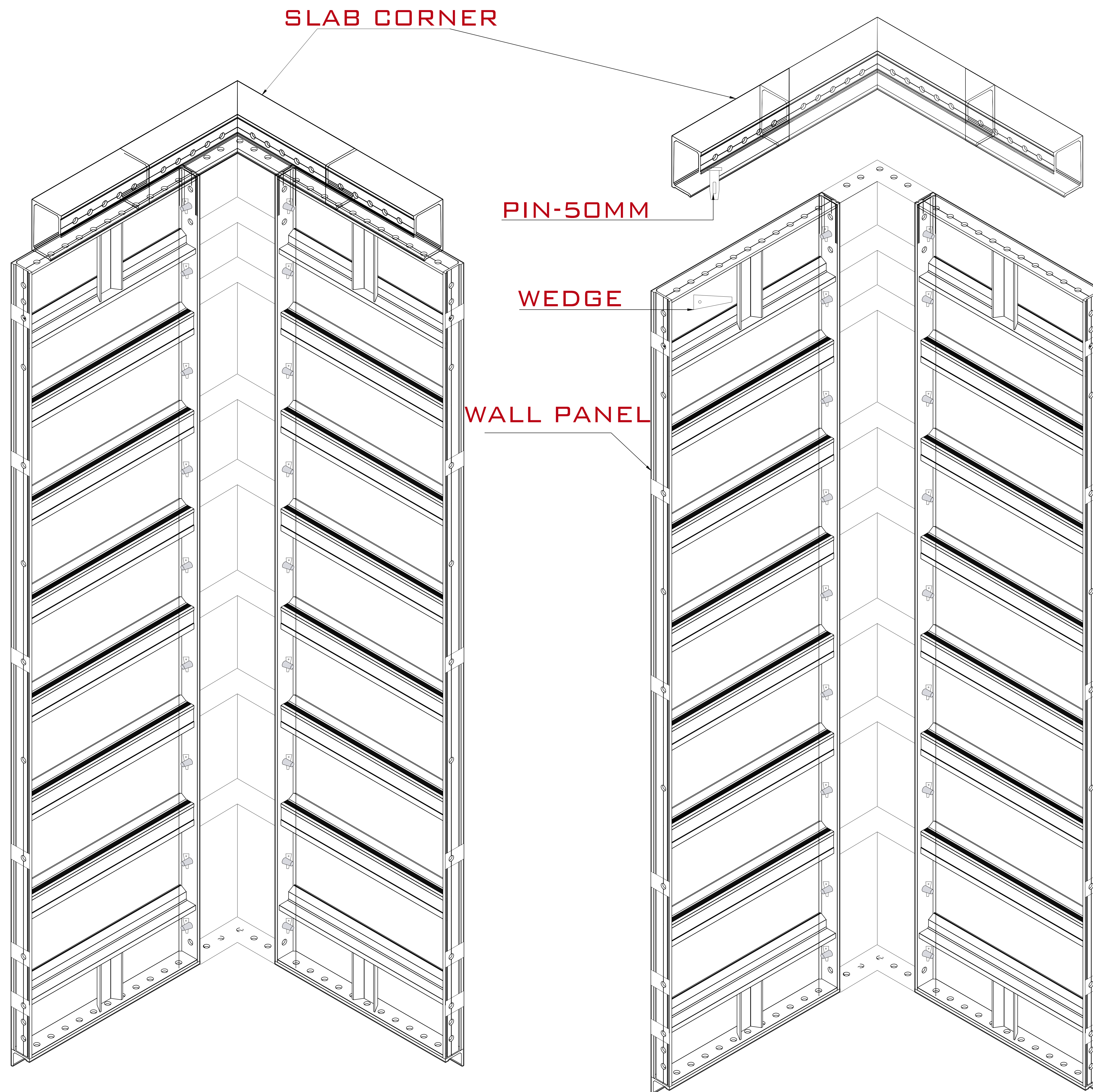
STEP NO-04

Repeat Sequence No. 3 to complete the assembly of both the Internal and External Wall Panels.



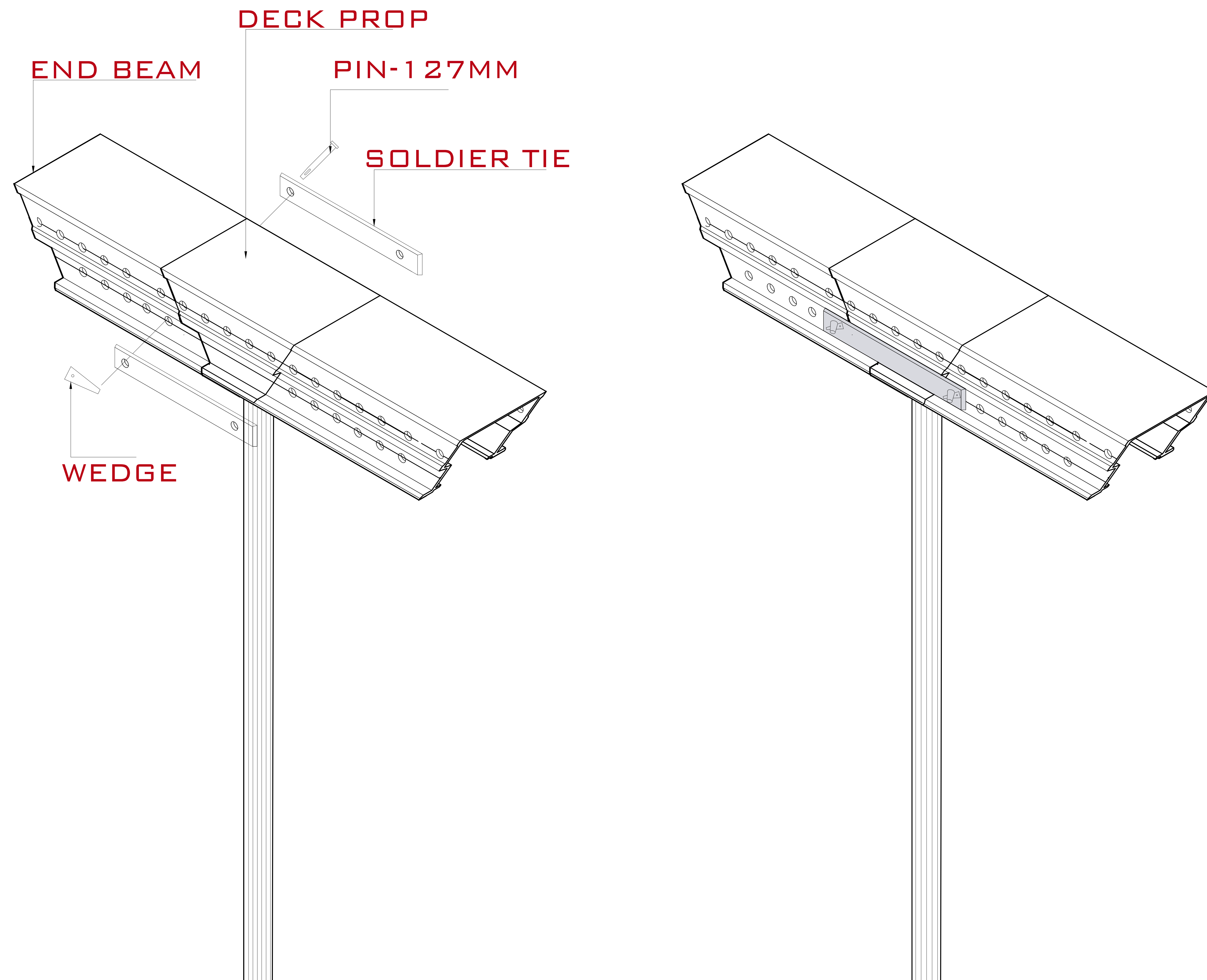
STEP NO-05

Install Slab Corner on the top portion of the Wall Panels with round pin & wedge.



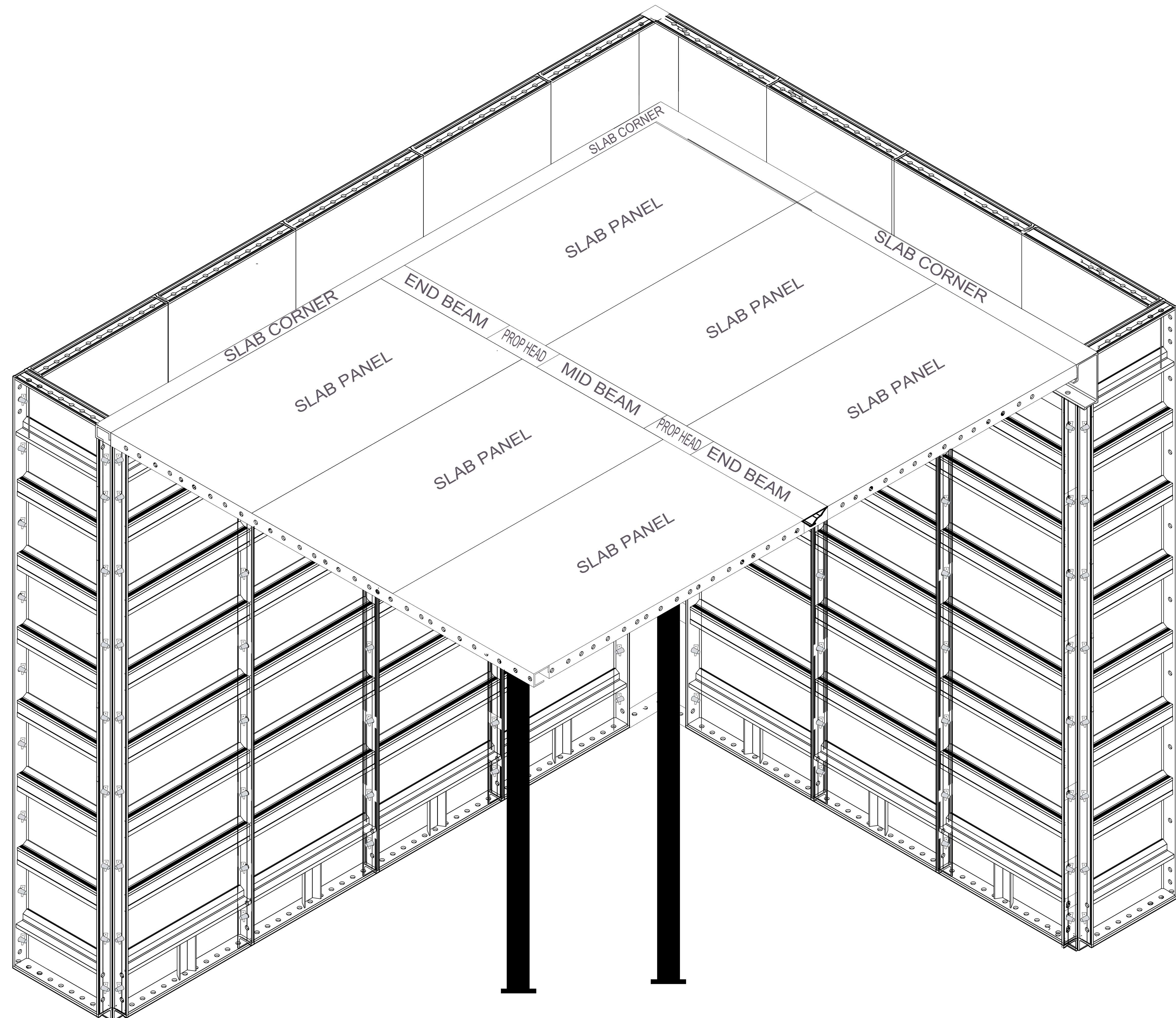
STEP NO-06

Aluspans mid beams / end beams and Prop head are combined by Beam splice bar with long pin and wedge at the bottom section.



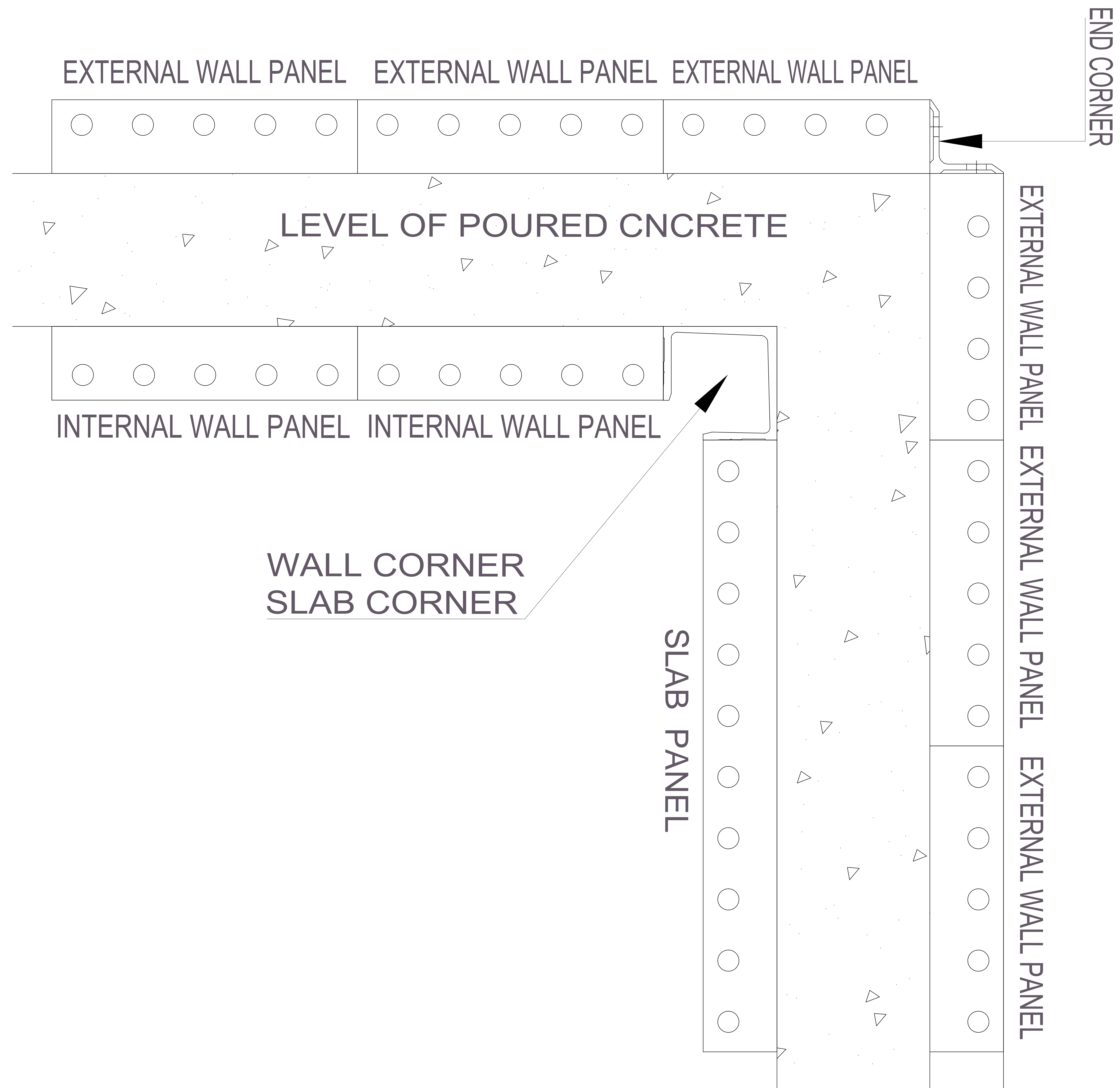
STEP NO-07

Start the assembly of the Slab Panels from the Slab corner Internal. Subsequently, fill out the whole slab area by pinning the slab panels together with the Aluspan (Comprises of Aluspan and cantilevers). Mid Beams/ End Beams.



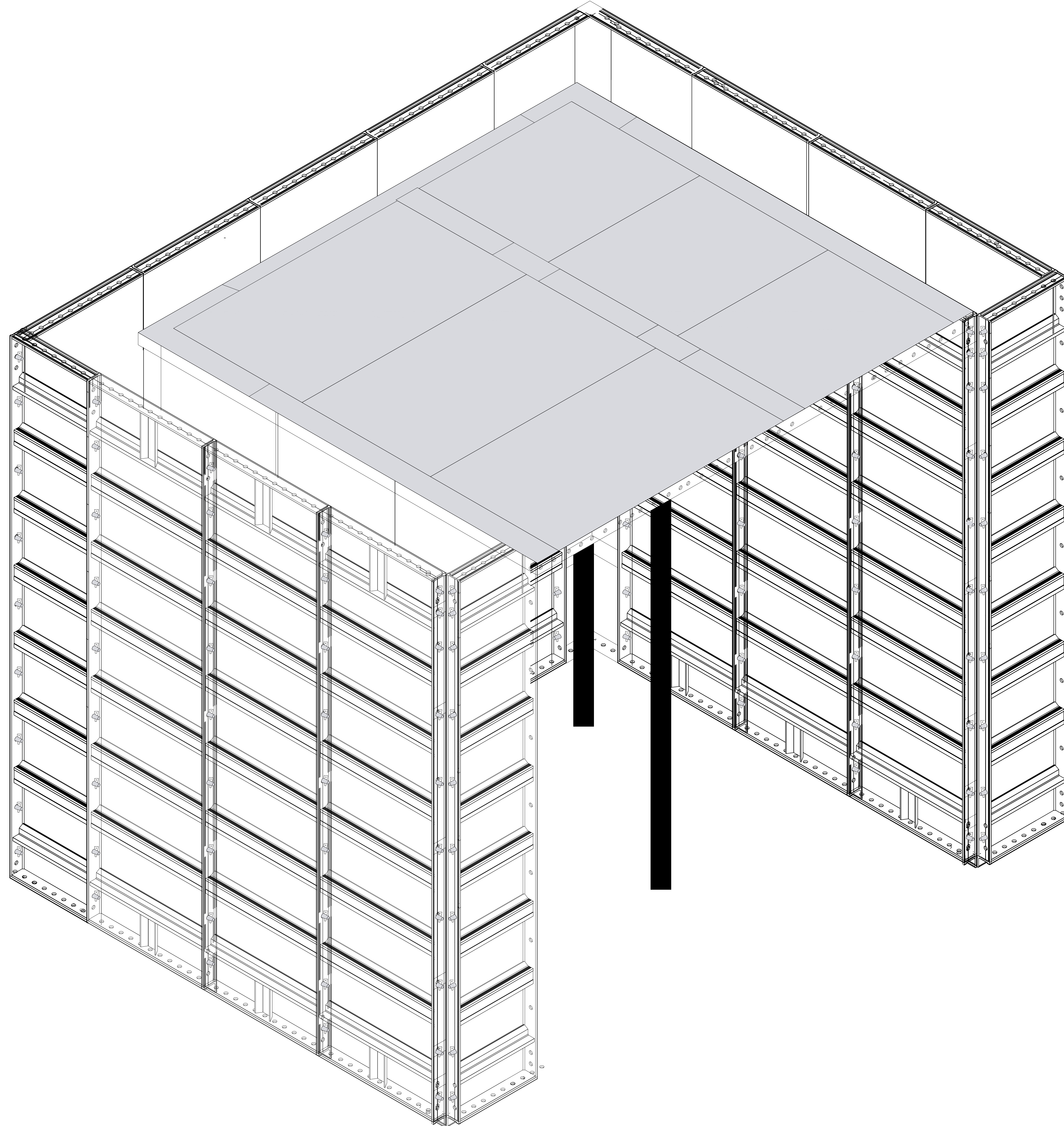
STEP NO-08

Additional Wall Panels (or Kickers) are fixed to the external Wall Panels to raise to the appropriate height to contain the slab concrete when it is poured.



STEP NO-09

Additional Wall Panels (or Kickers) are fixed to the external Wall Panels to raise to the appropriate height to contain the slab concrete when it is poured.





VANSS ALUMINIUM DESIGN LLP
Growing With You

STEP NO-10

Always ensure that wall ties, pins and wedges are properly installed and secured before pouring concrete into the forms. Ensure that concrete pouring is distribute evenly throughout the Wall Panels section before commencing to cast the slabs level area.